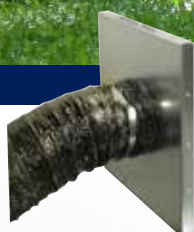


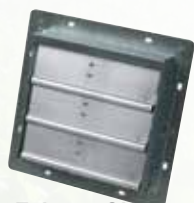
**L.B.WHITE**



*Air Inlet Transition Kit*



*Motorized Inlet Shutter*



*Exhaust Shutter*



*Shutter Exhaust Fan*

## HORTICULTURAL VENTILATION

- Easy installation
- Kits come preassembled
- Includes mounting specifications

All heaters require ventilation for proper operation. The **Therma Grow™** is no different. The **Therma Grow™** requires 2.5 CFM per 1000 Btu/h of air exchange. For a **Therma Grow™** 220, this translates to 550 CFM of air exchange for an indoor installation, and 220 square inches of exit area for an outside mount. Similarly, a **Therma Grow™** 120 requires 300 CFM per indoor mount, and 120 square inches of exit area per outdoor mount. To make installation easy, L.B. White offers several preassembled kits that include application specific mounting & ventilation equipment. See chart on reverse side for required air exchange for maximum performance.

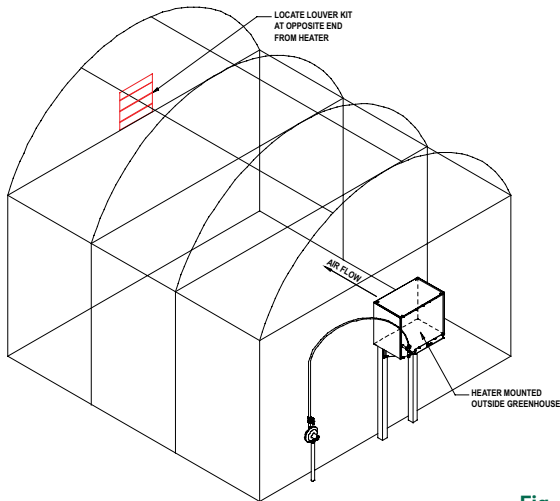
See Figs. B and C

See Fig. A

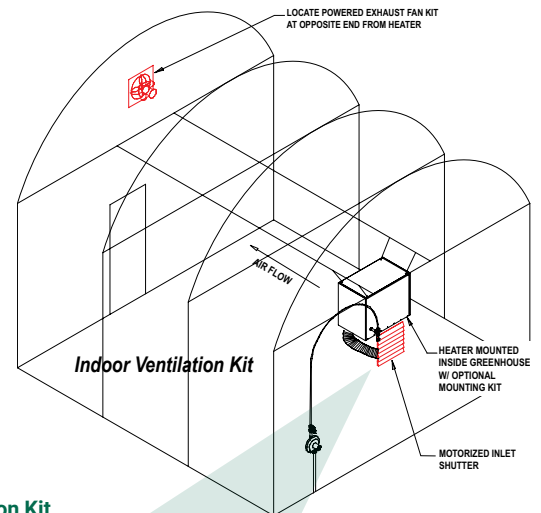
	Fan Diameter	Required Wall Opening	Motor HP	Volts	Phase	Ship Wt. (Lbs)
INDOOR KITS						
#25995 - Therma Grow™ 120 <del>Install and Vent Kits Include:</del>						26
Motorized Inlet Shutter	-	13 1/2" x 13 1/2"	-	115	1	
Shuttered Exhaust Fan	10	10 1/4" x 10 1/4"	1/30	115	1	
Air Inlet Transition Kit	-	-	-	-	-	
Air Inlet Hood	-	-	-	-	-	
Eyebolts and Chains	-	-	-	-	-	
#25985 - Therma Grow™ 220						27
Motorized Inlet Shutter	-	15 1/2" x 15 1/2"	-	115	1	
Shuttered Exhaust Fan	10	10 1/4" 10 1/4"	1/30	115	1	
Air Inlet Transition Kit	-	-	-	-	-	
Air Inlet Hood	-	-	-	-	-	
Eyebolts and Chains	-	-	-	-	-	
OUTDOOR KITS						
#24690 - Therma Grow™ 120						40
Exhaust Shutter	-	10 1/2" x 10 1/2"	-	-	-	
Outdoor Mount Kit	-	-	-	-	-	
#24688 - Therma Grow™ 220						50
Exhaust Shutter	-	14 1/2" x 14 1/2"	-	-	-	
Outdoor Mount Kit	-	-	-	-	-	

Minimum Air Exchange Requirements	Therma Grow™ 120 or 120 Plus	Therma Grow™ 220 or 220 Plus
Indoor Installation (cu. ft per min)	300 CFM	550 CFM
Outdoor Installation (sq. inches of exit area)	120 in <sup>2</sup>	220 in <sup>2</sup>

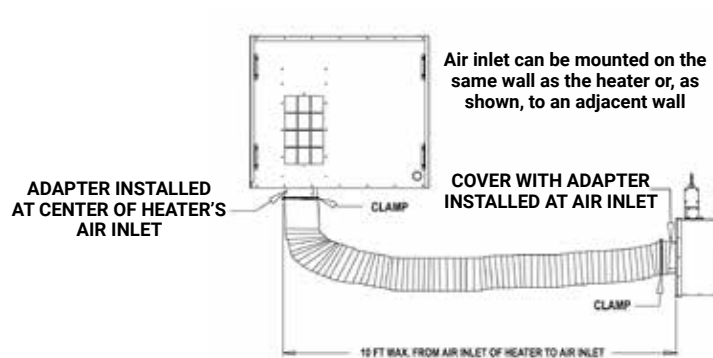
**Fig. A - Outdoor Ventilation Kit**



**Fig. B - Indoor Ventilation Kit**



**Fig. C - Indoor Mount with Air Inlet Transition Kit**



**Indoor Mount with Air Inlet Transition Kit**



Innovative Climate Solutions

411 Mason Street, Onalaska, WI 54650  
 800 345 7200 (toll free) or 608 783 5691  
 608 783 6115 (fax)  
 info@lbwhite.com | www.lbwhite.com

**CA RESIDENTS:**  
**WARNING**  
 Cancer and reproductive harm. See  
[www.P65Warnings.ca.gov](http://www.P65Warnings.ca.gov).

© 2018 L.B. White Company  
 All rights reserved.  
 All specifications are subject  
 to change without notice.